



SG Series GUARDRAIL SYSTEM

Description

The SG (Seam Grabber) Series features a base plate that 'grabs' the seams on metal roofs and when combined with one of our roof safety rail systems, provides roof edge protection that complies with OSHA regulations for guardrails. The galvanized base plate is designed to fit various types of standing roof seams and can be used with the Architectural Series Railings, SafetyRail2000, StealthRail and Perma-Line Warning Line Systems.

Basic Use

The SG guardrail system is ideal for protection for workers at mechanical units, ladder areas and roof hatches or to create a full perimeter roof edge protection system.

OSHA Compliance

Compliant with regulations for fall protection guardrails:

- 29 CFR 1926.502

Features

- Complies with OSHA regulations
- Hot-dipped galvanized finish
- Complies with OSHA regulations
- Can be used with the Architectural Series Railings, SafetyRail2000, StealthRail and Perma-Line Warning line Systems
- Utilizes S-5 clamps
- CAD Layouts included for installation

Minimum Requirements

In order to meet OSHA regulations for fall protection, outriggers must be utilized (returns/counter weights). Whether the Danger Side Run is 5' or 1000' in length, you must have these in place at the beginning and at the end of the run. Outriggers are standard rail kits that are connected at approximately 90° to the Danger Side Run of each end rail section.



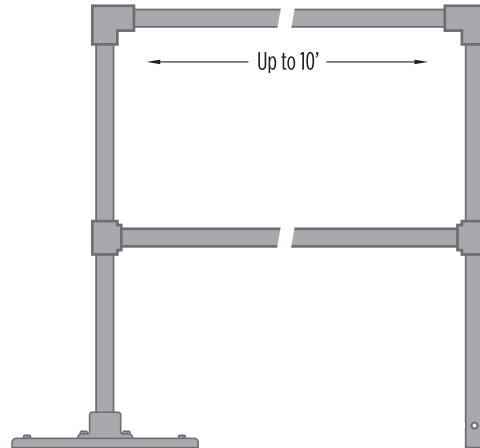
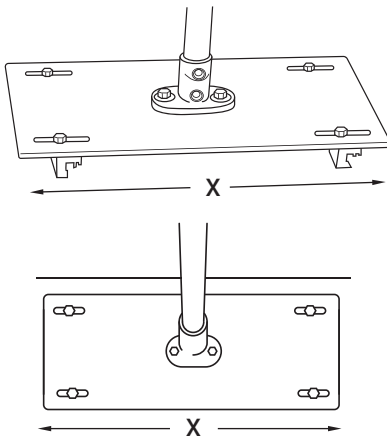
SG Series Roof Safety Rail for metal roofs for Roof Hatch opening protection



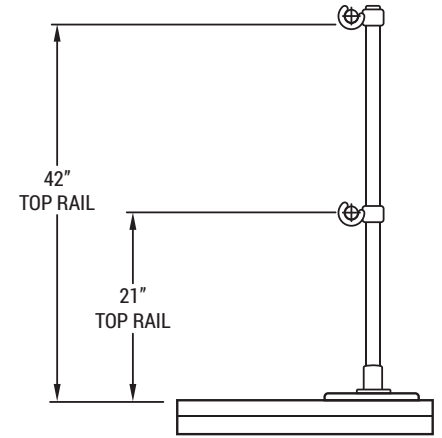
SG Series Roof Safety Rail for metal roofs base plate



BASE

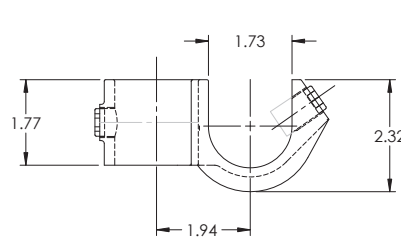


SIDE VIEW

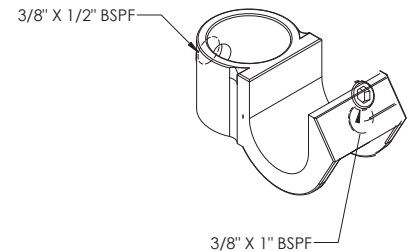


Pipe And Fitting Construction:

Uses 21ft lengths of pipe that can be positioned into the saddle fittings. Field cutting to shorter lengths is required.



SADDLE FITTING



Roof Edge Protection

Approved Product: SG Guardrail System, Tractel - Bluewater Manufacturing distributed by Dakota Safety www.dakotasafety.com 866-503-7245

Standards: System shall have top and mid rail in accordance with OSHA Standards - 29 CFR 1910.23 and 29 CFR 1926.502

Structural Load: 200 lb (90.7 kg), minimum. in any direction to all components in accordance with OSHA Regulations 29 CFR 1910.23 and 29 CFR 1926.502

Height: 42 inches (1067 mm), minimum

Railings: 1.66" OD. schedule 40 galvanized pipe

Mounting Base Plates: Galvanized base plates with receiver post and utilizing S-5-S roof clamps

Hardware: Securing pins shall be 101 O carbon steel zinc plated and yellow chromate dipped. Pins shall consist of collared pin and lanyard that connects to lynch pin.

Finishes: Available in standard Hot-Dip Galvanized. Custom paint finish over galvanized pipe is available.