



Mezzanine Door Gate

Problem:

When the doors on an upper level of a mezzanine are open for moving material, equipment or for air ventilation, a fallsituation is created and fall protection is required to be in place or utilized by workers. An engineered solution that provides continuous protection with no PPE is the Mezzanine Door Gate.

Description

The self-closing mezzanine safety gate system allows for safe use of the door opening when the door is in the open position without having to rely on occupants deploying an active fall protection measure, or related required administration and documentation. The gates are designed to meet OSHA's requirements for fall protection guard rail while also allowing for material to be moved through the gate by pushing the gate open. NOTE: The gates are only compliant when they are in the closed position.

Basic Use

The gate is specially fabricated to fit the existing door opening with a frame that is anchored into the opening and supports the gate. The gates can easily be pushed open with a pallet on a lift truck and will self-close once the material has been pushed all the way through the gate.

Features

- Mild steel construction
- Powder coat safety yellow painted finish
- 16 ga steel sheeting on the gate
- Hinges: Torsion, stainless steel housed within hinge pivot
- Custom face mounting bracket

OSHA Compliance

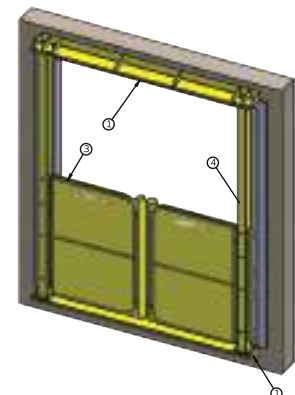
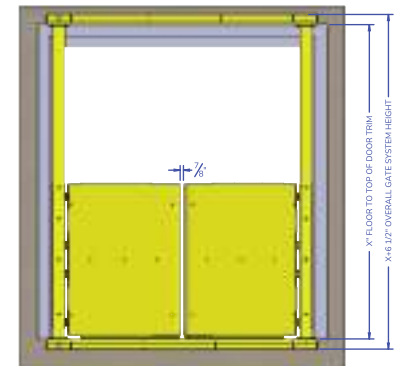
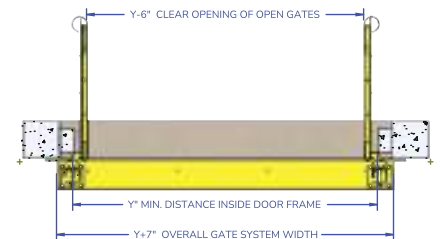
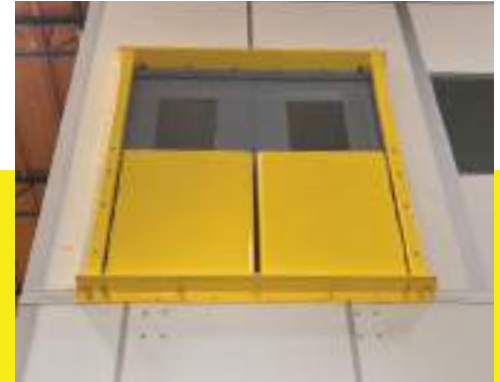
The gates are designed to complaint with OSHA's requirement for a guardrail system with a 42-inch height and the ability to withstand a 200 load in the closed position when properly anchored at the time of manufacture.

IMPORTANT INSTALLATION NOTE

No anchors or anchor holes are provided in the frame. Anchorage design and/or fastener type and verification of existing structure's ability to withstand all load transferred by the gate is by others, not the manufacturer.



Mezzanine Door Gate is built to be OSHA compliant for guard rail fall protection and is suitable for commercial and industrial applications.



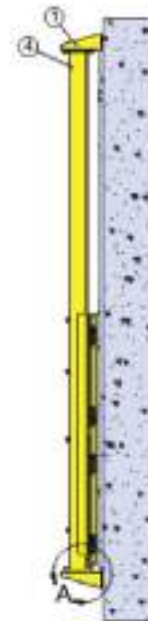
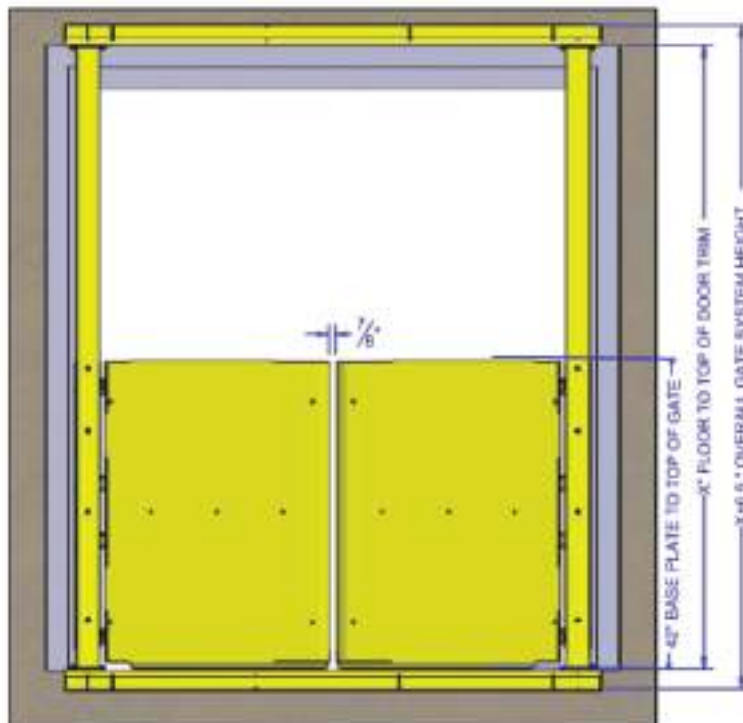
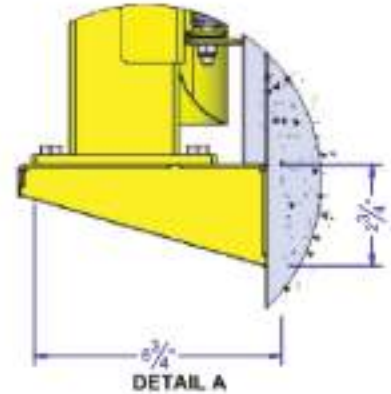
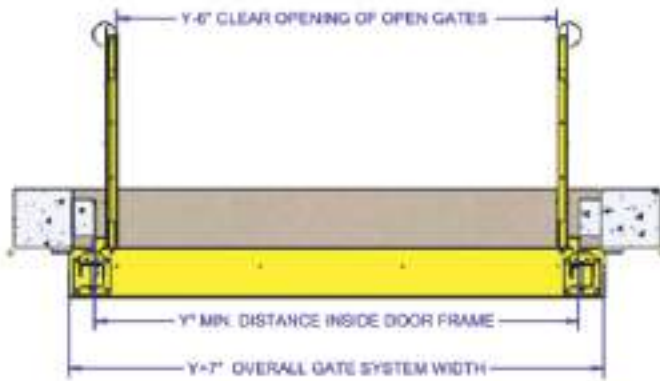


**DAKOTA
SAFETY**.com >

 **866-503-7245**

 **info@dakotasafety.com**

Measuring Guide



_____ Y dimension [min distance inside door frame]

_____ X dimension [floor to top of door trim]



DakotaSafety.com



866-503-7245



info@dakotasafety.com